

2019

NO

2000 5

A

2019

6,000

10.26

“ ”

2A

“ ” “ ”

2019

2019

12

12

2018 1 446,568,890
99.9970%
2 13,600
0.0030%
3 0
0
0%

2018 1 446,568,890
99.9970%
2 13,600
0.0030%
3 0
0
0%

2018

2019 5

2019 4

21

30

2018 1 446,568,890
99.9970%
2 13,600
0.0030%
3 0
0
0%

2018 1 446,568,890
99.9970%
2 13,600
0.0030%
3 0
0
0%

2018 1 446,568,890
99.9970%
2 13,600

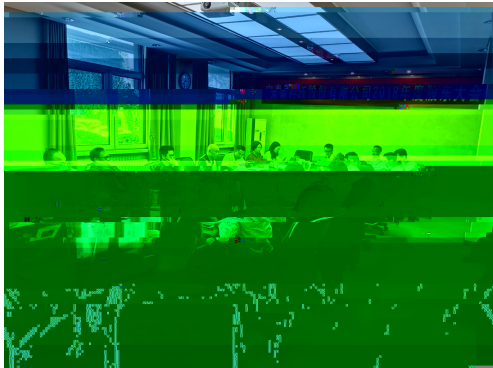
	31	16		2	21,200 0.0057%
				3	0 0 0.0000%
			<	1	370,265,088 99.9943%
			>	2	21,200 0.0057%
				3	0 0 0.0000%

9

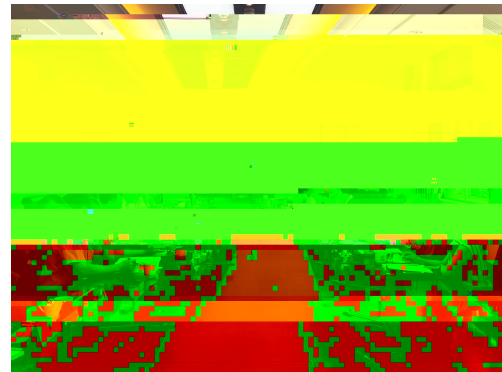
4

4

77



2018



2000

19

15

7.2

2019

2018

2018-2020

71

39

1

210

“ ”

2018

“B”

2019

7.43

30.56%

“ ”

2019

170

76

“ ”

8

286

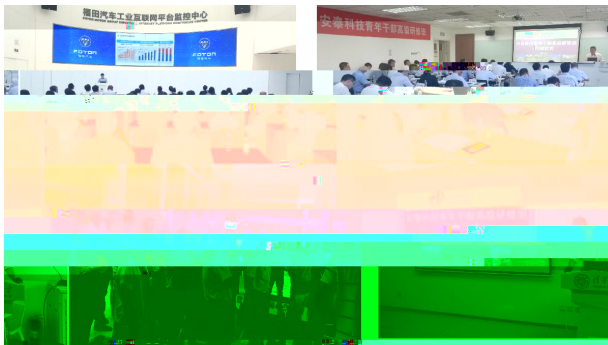
1000

75

2018

74%

4





		2019
	5294	3179
458		68
3317		

10

QC

α ω ε ρ ι ζ κ γ

“ ”

2011	8	QC	
		2019	64 QC
QC		QC- O ...	

2019

36



QC



“8#”

2019

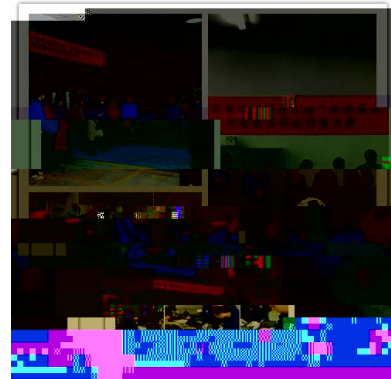
4

11

“ ”

18

600

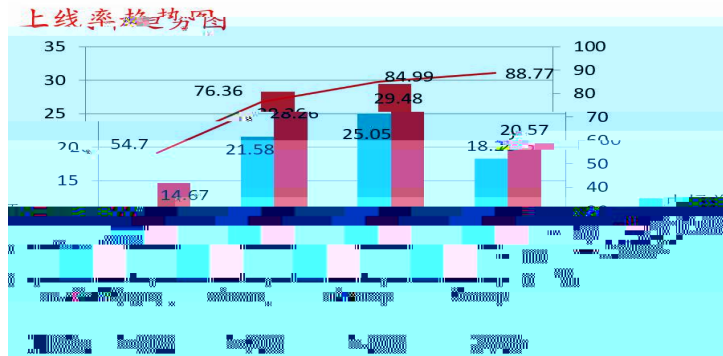


2016

2019

97.03%

88.76%



2016 — 2019

2019

PPT

VI

“

”



2019 9

1402

35

“

”

800

“ ”

30%

2019

2.35%

4.25%

“ ”

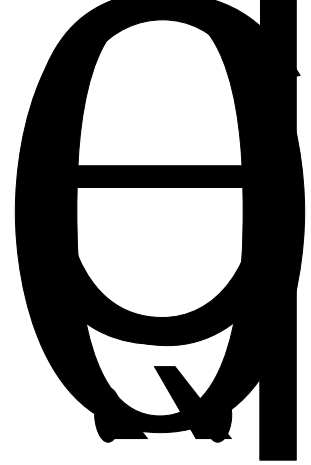
7

0.7

2.4

1510





2019

1.89

26

2019

“

”

“

”

(

4

2

2

78

51

3

1

1



2019 1 1 -2019 12 31

(GRI)

G3.1

“ ”

“ ” “ ” “ ”